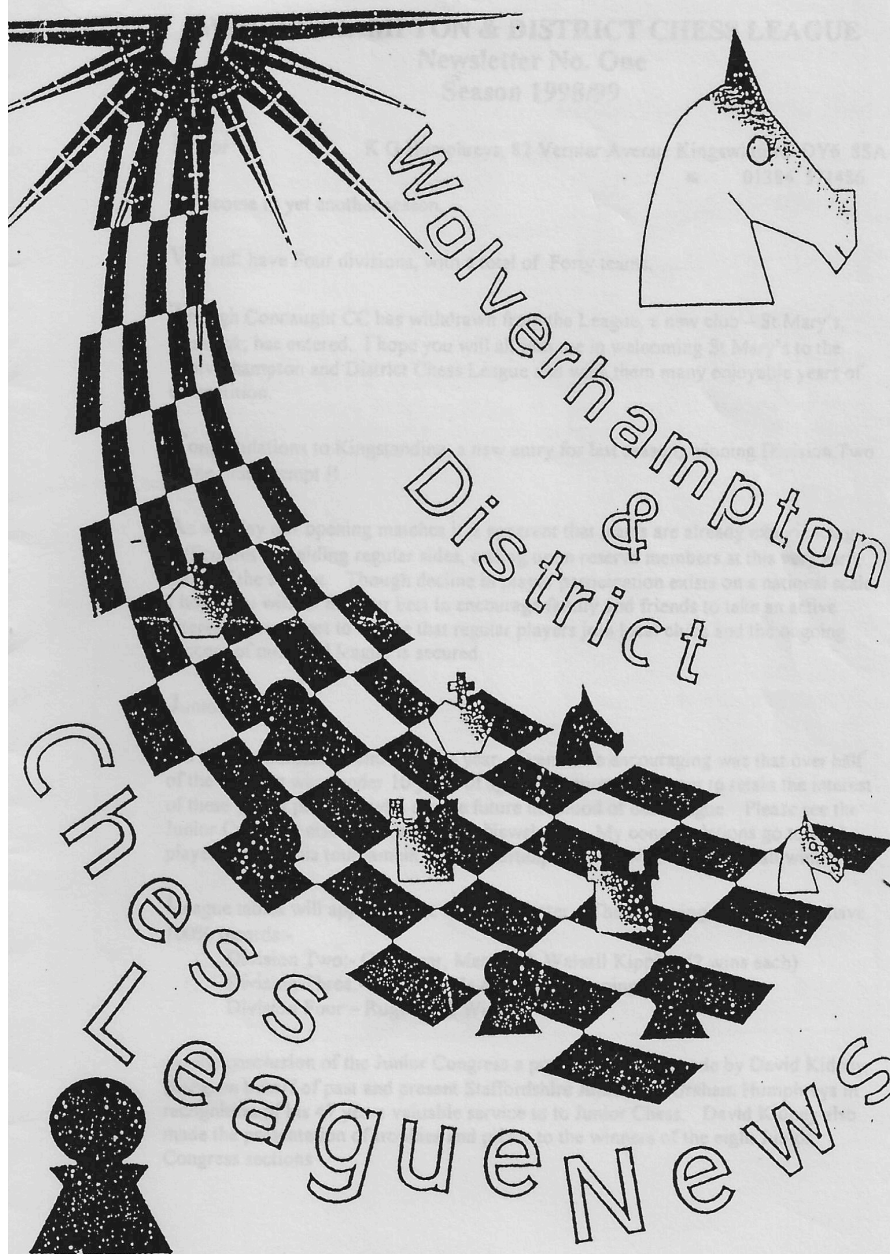


95899-1

CWS  
copy



**WOLVERHAMPTON & DISTRICT CHESS LEAGUE**  
**Newsletter No. One**  
**Season 1998/99**

**Editor** K G Humphreys, 82 Vernier Avenue Kingswinford DY6 8SA  
☎ 01384 571486

**W**elcome to yet another season.

**W**e still have Four divisions, with a total of Forty teams.

**T**hough Connaught CC has withdrawn from the League, a new club – St Mary's, Cannock, has entered. I hope you will all join me in welcoming St Mary's to the Wolverhampton and District Chess League and wish them many enjoyable years of competition.

**C**ongratulations to Kingstanding, a new entry for last season, winning Division Two at the first attempt !!

**A**s we play our opening matches it is apparent that teams are already experiencing difficulties in fielding regular sides, calling upon reserve members at this very early stage of the season. Though decline in player participation exists on a national scale I hope you will all do your best to encourage family and friends to take an active interest in our sport to ensure that regular players join local clubs and the ongoing success of our local league is secured.

**Junior Congress**

**W**e had an increase in entrants this year. Even more encouraging was that over half of the entrants were under 10 years of age. We must endeavour to retain the interest of these young players, who are the future lifeblood of our League. Please see the Junior Congress elsewhere within the Newsletter. My congratulations go to all the players within this tournament. Your participation shows that you are all winners !

**L** league tables will appear in the next newsletter. The following teams to date have 100% records:-

Division Two:- Goodyear, Mercia, & Walsall Kipping (2 wins each)

Division Three:- Thompson's & Walsall Kipping (3 wins each)

Division Four – Rugeley (2 Wins)

**A**t the conclusion of the Junior Congress a presentation was made by David Kidney (MP), on behalf of past and present Staffordshire Juniors, to Graham Humphreys in recognition of his 47 years valuable service to to Junior Chess. David Kidney also made the presentation of trophies and prizes to the winners of the eight Junior Congress sections

A presentation was also recently made to Alf Schroeder, of Goodyear Chess Club, for his participation as a league player within the Wolverhampton & District League for FIFTY years.. The presentation was made by Ray Dolan, M C C U P R Director.

#### Great Britain Chess Supporters Club

Ray Dolan, M C C U P R Director, is attempting to start a National Chess Supporters Club. Membership is available at a cost of Five Pounds (£5.00). Please contact Ray on 01922 446898 to join and for further information

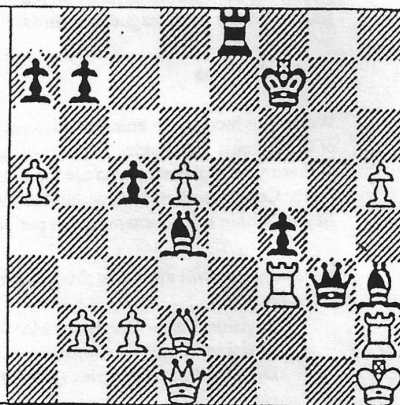
#### Obituary – Gary M Wellings

It is my unhappy duty to report the untimely death of Gary at the early age of 40. Gary joined Thompson's Chess Club at the age of 12 and played for a number of years, before moving to Bushbury Chess Club. He played in the Birmingham and Wolverhampton Chess Leagues and played for the county, at both Junior and Senior levels, and was a fairly strong player. He will be missed by Bushbury CC and all who knew him. Sincere condolences are offered to his family on behalf of myself and on behalf of all members of the League who had the privilege of knowing Gary.

Graham Humphreys  
Editor

#### Puzzlers Corner

A puzzle for you this month-  
Black to move. Can you see  
the winning move?  
Solution, page 8



### Division One

<b>Bushbury</b>	2 - 4	<b>West Brom A</b>	<b>Stourbridge</b>	3 - 3	<b>Walsall Kipp</b>
L Grinsell	0 - 1	D W Clark	D Downes	0 - 1	D W Anderton
R Parry	½ - ½	J E Crump	G Thomas	½ - ½	W Rea
J Stanforth	½ - ½	N A Walker	E Horwill	½ - ½	R G Jones
P Staley	0 - 1	G Hill	T Howarth	1 - 0	C Pohribnyj
R Brodie	0 - 1	P J Wilkes	S Jukes	1 - 0	N Young
A B C Smith	1 - 0	K Butler	F Tatler	0 - 1	D Friend
<b>Kidderminster</b>	2½ - 3½	<b>Kingstanding</b>	<b>Walsall</b>	3 - 3	<b>Telford</b>
M D Bissell	0 - 1	A Southall	D W Anderton	½ - ½	N J Rutter
J Wrench	½ - ½	K Thomas	M Denny	1 - 0	D W Gostelow
F Pickett	½ - ½	P Savage	W Rea	½ - ½	C J Roberts
G C Link	½ - ½	D Brown	D Pritchard	0 - 1	R P Archer
J F Gittus	½ - ½	G Barron	C Pohribnyj	½ - ½	R G Thompson
P Thomas	½ - ½	R Tuckey	N Young	½ - ½	I R Wilson
<b>Lichfield</b>	4 - 2	<b>Wolverhampton</b>	<b>West Brom A</b>	2½ - 3½	<b>Telford</b>
P Collins	½ - ½	T L Fellows	D W Clark	0 - 1	N J Rutter
R Allen	1 - 0	P Jones	J E Crump	½ - ½	J Roberts
R Farnery	½ - ½	J Handscombe	N A Walker	½ - ½	R P Archer
M Maher	1 - 0	P Eastwood	G Hill	½ - ½	R G Thompson
A Grant	0 - 1	M N Wootton	P J Wilkes	0 - 1	R Wilson
S Wilson	1 - 0	G Rosser	C Bryant	1 - 0	G Matthews
<b>Stafford</b>	3½ - 2½	<b>Bushbury</b>	<b>West Brom A</b>	2½ - 3½	<b>West Brom B</b>
L Cooper	½ - ½	L Grinsell	D W Clark	1 - 0	G Wesson
G Acey	½ - ½	R Parry	J E Crump	½ - ½	M Reynolds
J Hayward	1 - 0	J Stanforth	N A Walker	0 - 1	M Smith
G Orme	DEF - 1	P Staley	G Hill	1 - 0	D Backhouse
D Morris	½ - ½	A B C Smith	D M Davies	0 - 1	J Smith
A Leadbetter	1 - 0	R Brodie	K Butler	DEF - 1	C Bryant
<b>Stafford</b>	3 - 3	<b>Stourbridge</b>	<b>Wolverhampton</b>	3½ - 2½	<b>Kidderminster</b>
G Acey	½ - ½	D Downes	M Townsend	1 - 0	M D Bissell
J Hayward	1 - 0	E Horwill	T L Fellows	½ - ½	F Pickett
A T Leadbetter	1 - 0	I Howarth	P Porter	0 - 1	G C Link
P Ganeri	0 - 1	S Jukes	P Jones	½ - ½	J F Gittus
G F deVisme	½ - ½	F Tatler	J Handscomb	½ - ½	R Thomas
P Evans	0 - 1	R Branford	M Wootton	1 - Def	M Riley

## Division Two

Dudley	3½ - 2½	Rugeley	Rugeley	2 - 4	Goodyear
D G Tranter	0 - 1	R Crellin	R Crellin	½ - ½	Martin May
J Foxall	0 - 1	A Dobson	A Dobson	0 - 1	A Schroeder
M Blythe	1 - 0	R Fell	R Fell	1 - 0	J Cooper
P Sharratt	½ - ½	M Page	M Page	0 - 1	C Eddies
L Prescott	1 - 0	P Marklove	P Marklove	½ - ½	A Colabella
W Partridge	1 - 0	J Montaguc	J Montaguc	0 - 1	S Jones
Goodyear	3½ - 2½	Stafford	Rushall	4 - 2	Bushbury
Martin May	1 - 0	P Gancri	M Wragg	1 - 0	A Smith
A Schroeder	1 - 0	R Whitchose	C Bell	0 - 1	P Davies
C Eddies	0 - 1	R T Gogerty	J Home	½ - ½	R Brodie
P O'Donoghue	½ - ½	E Bailey	A Powis	1 - DEF	W Pinfold
P Blunt	½ - ½	P F Evans	N Parker	½ - ½	M Hancox
S Jones	½ - ½	D Nesbitt	N Sims	1 - DEF	K Boothe
Lucas BS	1½ - 4½	Rushall	Walsall Kipp.	3½ - 1½	Brewood
M Tallis	0 - 1	M Wragg	S Dickens	½ - ½	R Grainger
D Stockhall	½ - ½	J Sadler	D Friend	1 - 0	D Laight
L Johnson	0 - 1	A Powis	M Groombridge	1 - 0	P Crozet
R Gough	1 - 0	N Parker	S Beasley	1 - 0	D Buckley
H Hughes	0 - 1	R J Hancox	J Evans	0 - 1	B Hall
A Siddiqi	0 - 1	N Sims	DEFAULT	0 - 1	C Buxton
Mercia	4½ - 1½	Wolverhampton B	Wolverhampton	2 - 4	Walsall Kipp.
A P McCumskey	1 - 0	D Bird	D Bird	1 - 0	S Dickens
M Share	½ - ½	F Wood	P Eastwood	0 - 1	D Friend
T Dawes	1 - 0	P Eastwood	F Wood	0 - 1	M Groombridge
B R Smith	½ - ½	G Rosser	R Wilkinson	1 - 0	P Jones
J Phillips	1 - 0	R Wilkinson	P Atkiss	0 - 1	C Southall
D Perks	1 - 0	P Broomhall	P Broomhall	0 - 1	S Beasley

### Division Three

<b>Kidderminster</b> T Pountney I Deakin P Kitchen K Brant M Kitchen	1½ - 3¼ 0 - 1 1 - 0 0 - 1 ½ - ½ 0 - 1	<b>Walsall Kipp.</b> C Southall J Martin A Shrimpton B Davies D Jarvis	<b>Thompson</b> C Savage K Pittaway Mrs J Briscoe G Lines M J Jones	3¼ - 1½ 1 - 0 1 - DEF 0 - 1 ½ - ½ 1 - 0	<b>Telford</b> S Tarr T Jones C L Roberts A Jones DEF
<b>Lichfield</b> G Monks A Mieleniewski P Griffiths C Brown P Fathers	4½ - ½ ½ - ½ 1 - 0 1 - 0 1 - 0 1 - 0	<b>Stafford</b> P Evans D Nesbitt F Hill J Tuckley K Dwight	<b>Thompson</b> C Savage K G Humphreys G Lines D Guest Mrs J Briscoe	3¼ - 1½ 1 - 0 ½ - ½ 0 - 1 1 - 0 1 - 0	<b>Wolverhampton D</b> B Lewis P Hubbard P Sanghera B Priest P Priest
<b>Rushall</b> D Bell D Lambe J Strachan S Cooksey S Allen	5 - 0 0 - 1 1 - 0 ½ - ½ 0 - 1 1 - 0	<b>Goodyear</b> P O'Donoghue A Colabella J Grigulis K Phillips S Jones	<b>Walsall Kip</b> C Southall J Martin A Shrimpton B Davies D Jarvis	4 - 1 1 - 0 1 - 0 1 - 0 ½ - ½ ½ - ½	<b>Goodyear</b> P O'Donoghue J Grugulis K Keady K Phillips S Jones
** Result Amended - Breach of Rule 5 C (1) - Goodyear					
<b>Stafford</b> G deVisme T Bailey D Nesbitt S Keeley J Tuckley	2 - 3 0 - 1 0 - 1 1 - 0 1 - 0 0 - 1	<b>Kidderminster</b> T Pountney I Deakin P Kitchen K Brant M Kitchen	<b>Walsall Kipp</b> C Southall J Martin B Davies A Shrimpton P Gavin	3¼ - 1½ ½ - ½ 1 - 0 0 - 1 1 - 0 1 - 0	<b>Lichfield</b> D Abell C Brown C Ricketts P Fathersd S Andrews
<b>Telford</b> J Wilkinson J Tunks M Watson G L Roberts A Jones	4 - 1 1 - 0 1 - 0 1 - 0 0 - 1 1 - 0	<b>Rushall</b> D Lambe J Strachan S Allen P Spenceer K Cooper	<b>Wolverhampton D</b> P Hubbard B Lewis L Hesbrookj P Price P Sanghera	2½ - 2¼ 0 - 1 0 - 1 1 - 0 ½ - ½ 1 - 0	<b>Wolverhampton C</b> P Atkiss A Ward G Sands A Hodges S Wilson
<b>Wolverhampton C</b>					
P Atkiss A Hodges A Ward S Wilson J Wakelam	2 - 3 0 - 1 0 - 1 1 - 0 1 - 0 0 - 1	Thompson C Savage K G Humphreys K Pittaway Mrs J Briscoe G Lines			

### Division Four

Brewood	2 - 3	Mercia	Rugeley	3½ - 1½	St. Mary's Cnk
G Luck	½ - ½	R Price	M Page	½ - ½	R Lewis
R W Fletcher	½ - ½	I Malpass	A Meakin	1 - 0	R Westwood
S Wagg	0 - 1	J Rich	T Westwood	1 - 0	B Lynam
A Davies	1 - 0	C Lane	S Heath	1 - 0	M Lubacz
J Irons	0 - 1	K Bradley	M Ineson	0 - 1	B Mayne
Bushbury	2 - 3	Rugeley	Rushall	2 - 3	Walsall Kipp.
P Scott	½ - ½	A Meakin	K Butler	1 - 0	Mrs D McIntosh
K Booth	1 - 0	S Heath	C Butler	0 - 1	P Gavin
J Whitehead	0 - 1	J Westwood	A Parker	0 - 1	K Moore
A Staniforth	½ - ½	P Everall	K Cooper	1 - 0	P Nixon
M Staniforth	0 - 1	M Iveson	R Parker	0 - 1	A Perry
			Walsall Kipp	2½ - 1½	Mercia
			Mrs D McIntosh	0 - 1	R Price
			Mrs J Evans	1 - 0	I Malpass
			K J Moore	0 - 1	J Rich
			C Billings	½ - ½	C Lane
			P Nixon	1 - 0	K Lowe

\*\*Result Amended -

Breach of rule 5(H) Mercia, Board 5\*\*

Solution to Puzzlers Corner:-  
 1. R - Q8 + 1, and if  
 2. B x R Q - N8 Mate; or  
 2. Q x R Q x R (B6) Mate



**Results of the Staffordshire Junior Chess Congress Tournament, held 3 October 1998 at Weston Road High School, Stafford:-**

Place	Name	Club	Score	Place	Name	Club	Score
<b>U18: 4 Players competed – 6 Rounds</b>				<b>U11: 7 Players competed – 6 Rounds</b>			
J1 <sup>st</sup>	Tim Bailey	Stafford CC	4½	J1 <sup>st</sup>	Charlotte Wilcox	Rushall CC	5½
J1 <sup>st</sup>	David Sproston	Pavilion CC	4½	J1 <sup>st</sup>	Maxim Fedeczko	Pavilion CC	5½
3 <sup>rd</sup>	Tim Kessell	Pavilion CC	3				
<b>U 16: 6 Players competed - 6 Rounds</b>				<b>U10: 19 Players competed – 7 Rounds</b>			
1 <sup>st</sup>	Jonathan Blackburn	Kidsgrove CC	5½	1 <sup>st</sup>	Jacob Lourie	Ilam CC	7
2 <sup>nd</sup>	Glen Valentine	Pavilion CC	4	J12 <sup>nd</sup>	Robbie Bellin	Walsall Kipping cc	5
				J12 <sup>nd</sup>	Jason Lec	Pavilion CC	5
				J12 <sup>nd</sup>	Lec Edge	Pavilion CC	5
				J12 <sup>nd</sup>	Yankshi Yu	Pavilion CC	5
				1 <sup>st</sup> Girl	Yangshan Yu	Pavilion CC	4
<b>U 14: 7 Players competed – 6 Rounds</b>				<b>U9: 12 Players competed – 7 Rounds</b>			
J11 <sup>st</sup>	Robert Hawkes	Pavilion CC	4	1 <sup>st</sup>	Molly T Morruzzi	Cheddleton cc	7
J11 <sup>st</sup>	Simon Morrell	Grappenhall cc	4	J12 <sup>nd</sup>	William Bown	Cheddleton CC	5
J13 <sup>rd</sup>	Gordon Parton	Pavilion CC	3	J12 <sup>nd</sup>	Craig Harris	Pavilion CC	5
J13 <sup>rd</sup>	Andrew Dawson	Pavilion CC	3	1 <sup>st</sup> Girl	Sara WestWood	St Mary's CC	4
J13 <sup>rd</sup>	Danny Strong	Pavilion CC	3				
1 <sup>st</sup> Girl	Melanie Corbishley	Cheddleton cc	2				
<b>U12: 14 Players competer – 6 Rounds</b>				<b>U8: 13 Players competed – 7 Rounds</b>			
1 <sup>st</sup>	Suzie Blackburn	Kidsgrove CC	5½	1 <sup>st</sup>	Christopher Bellin	Walsall Kipping cc	6
2 <sup>nd</sup>	Paul Cobham	Derby	4½	2 <sup>nd</sup>	Shane Cartwright	Rushall CC	5
J13 <sup>rd</sup>	Richard Westwood	St. Mary's CC	4	3 <sup>rd</sup>	Nicholas Vaughan	Cheddleton cc	4
J13 <sup>rd</sup>	Steven Bruce	Pavilion CC	4	1 <sup>st</sup> Girl	Megan E Morruzzi	CheddletonCC	3½
J13 <sup>rd</sup>	Ben Hanks	Derby	4				
1 <sup>st</sup> Girl	Emma Atkins	Cheddleton cc	2				

Total Number of entries	82, from 28 Schools
U18, U16,U14	Run as one section
U12 & U11	Run as one section
U10	Run as one section
U9 & U8	Run as one Section

The next event will take place on 2<sup>nd</sup> October 1999. Venue, Weston Road High School, Stafford. Enquiries

The next event will take place  
2<sup>nd</sup> October 1999

Venue : Weston Road High School  
Stafford

Enquiries: Graham Humphries  
☎ 01384 571486