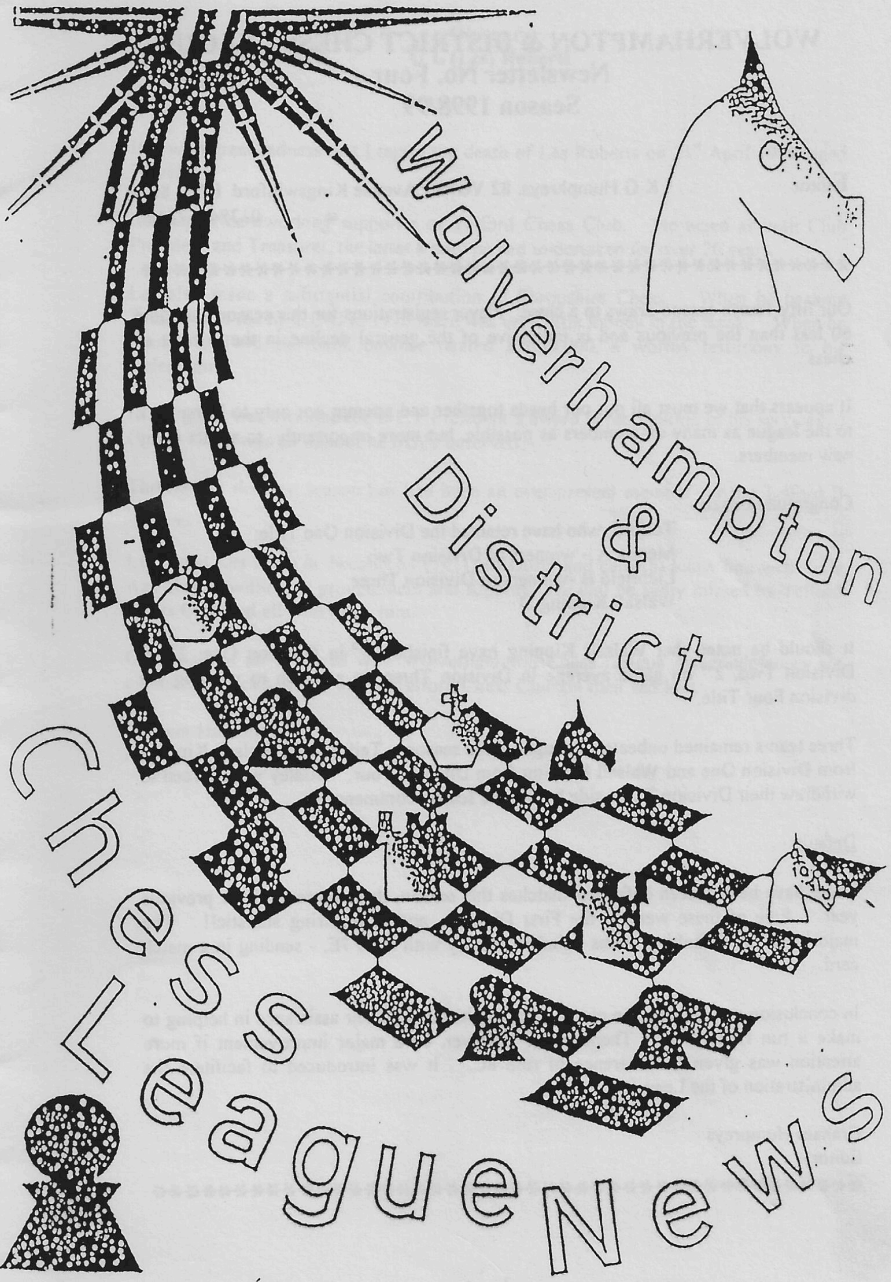


95/99-4



**WOLVERHAMPTON & DISTRICT CHESS LEAGUE**  
**Newsletter No. Four**  
**Season 1998/99**

Editor K G Humphreys, 82 Vernier Avenue Kingswinford DY6 8SA  
☎ 01384 571486

\*\*\*\*\*

Our fifty-fourth season draws to a close. Player registrations for this season are some 60 less than the previous and is indicative of the general decline in the interest of chess.

It appears that we must all put our heads together and attempt not only to bring back to the league as many ex-members as possible, but more importantly, to attract many new members.

Congratulations to:-

Telford, who have retained the Division One Title;  
Mercia A - winners of Division Two  
Lichfield B - winners of Division Three  
Walsall Kipping D

It should be noted that Walsall Kipping have finished 3<sup>rd</sup> in Division One, 2<sup>nd</sup> in Division Two, 2<sup>nd</sup> on game average in Division Three, in addition to winning the division Four Title.

Three teams remained unbeaten throughout the season - Telford and Walsall Kipping from Division One and Walsall Kipping from Division Four. Dudley were forced to withdraw their Division Three side before the season commenced.

Defaults

There have been fifteen defaulted matches this season, three more than the previous year. Five of these were in the First Division, not an inspiring statistic!! The majority of the defaulting teams failed to comply with Rule 7E. - sending in a match card.

In conclusion may I thank the members of the league for their assistance in helping to make it run fairly well. There could, however, be a major improvement if more attention was given to adherence of rule 8C. It was introduced to facilitate the administration of the League.

Graham Humphreys  
Editor

\*\*\*\*\*

**Obituary**  
**G L (Les) Roberts**

It is with great sadness that I report the death of Les Roberts on 21<sup>st</sup> April 1999, aged 74 years.

Les was a hardworking supporter of Telford Chess Club. He acted as both Club President and Treasurer, the latter a duty he had undertaken for over 20 years.

Les also made a substantial contribution to Shropshire Chess. When he became Treasurer of the M C C U in 1976 there was very little money in the Bank. When he retired in 1993 the bank balance neared £3000.000, a worthy testimony to his endeavour!

In 1994 Les was awarded the B C F President's award in recognition of his services to Chess. This was an honour he richly deserved.

Throughout the past season Les had been an ever-present member for the Telford B team

I first met Les when he became M C C U treasurer and came to know him well. He was always willing to provide help and support. He will be sadly missed by Telford Chess Club and all who knew him.

On behalf of all involved with Wolverhampton Chess League my condolences are extended to Les's family and to Telford Chess Club on their sad loss.

Graham Humphreys  
Editor

### Division One

<b>Bushbury</b>	3 - 3	<b>Walsall Kipp</b>	<b>Stafford</b>	4 - 2	<b>West Brom A</b>
R Parry	0 - 1	D Anderton	L Cooper	1 - 0	J E Crump
J Staniforth	½ - ½	R Jones	A Richardson	½ - ½	J A Friar
P Staley	½ - ½	C Pohribnyj	G Acey	½ - ½	N A Walker
P Pinfold	1 - 0	N Young	R Butters	1 - 0	G Hill
A B C Smith	1 - 0	M Groombridge	J Hayward	0 - 1	P J Wilkes
J Whitehead	0 - 1	D Friend	D Morris	1 - 0	D M Davies
<b>Bushbury</b>	3 - 3	<b>Wolverhampton</b>	<b>Stourbridge</b>	3 - 3	<b>Kidderminster</b>
R Parry	½ - ½	T L Fellows	G Thomas	½ - ½	M D Bissell
J Staniforth	½ - ½	F Wood	B Dudley	½ - ½	J Wrench
P Staley	1 - 0	M Wootton	E Horwill	1 - 0	F Pickett
P Pinfold	1 - 0	G Rosser	J Wilson	0 - 1	G C Link
A B C Smith	0 - 1	P Atkiss	I Howarth	½ - ½	M Riley
M Hancock	0 - 1	P Broomhall	S Jukes	½ - ½	P Thomas
<b>Kidderminster</b>	2½ - 3½	<b>Lichfield</b>	<b>Telford</b>	4 - 2	<b>Lichfield</b>
M D Bissell	½ - ½	P Collins	N Rutter	1 - 0	P Collins
P Yates	0 - 1	R Allen	C Roberts	1 - 0	R Allen
J Wrench	½ - ½	J Smith	R Archer	1 - 0	J Smith
F Pickett	1 - 0	G Hackett	R Thompson	½ - ½	R Farnery
M Riley	0 - 1	A Grant	I Wilson	½ - ½	A Grant
P Thomas	½ - ½	A Wilson	J Tunks	0 - 1	S Wilson
<b>Kidderminster</b>	½ - 5½	<b>Telford</b>	<b>Walsall Kipp</b>	3 - 3	<b>Stafford</b>
M D Bissell	0 - 1	N J Rutter	D W Anderton	0 - 1	G Acey
P Yates	½ - ½	C J Roberts	W Rea	½ - ½	J Hayward
J Wrench	0 - 1	R P Archer	C Pohribnyj	0 - 1	D Morris
F Pickett	0 - 1	A F Footner	N Young	½ - ½	A T Leadbetter
G C Link	0 - 1	R G Thompson	S Dickens	1 - 0	S Pedder
M Riley	0 - 1	I R Wilson	M Groombridge	1 - 0	DEFAULT
<b>Kingstanding</b>	2 - 4	<b>Bushbury</b>	<b>Walsall Kipp</b>	3 - 3	<b>West Brom B</b>
A Southall	½ - ½	R Parry	D W Anderton	1 - 0	G Wesson
K Thomas	½ - ½	J Staniforth	W Rea	0 - 1	M Reynolds
P Savage	½ - ½	P Pinfold	D Pritchard	1 - 0	M Gregg
M Biddle	0 - 1	P Staley	R G Jones	0 - 1	M Smith
R Tuckey	½ - ½	A B C Smith	C Pohribnyj	½ - ½	D Backhouse
G Barron	0 - 1	J Whitehead	N Young	½ - ½	J Smith
<b>Kingstanding</b>	3½ - 2½	<b>Stourbridge</b>	<b>West Brom A</b>	3 - 3	<b>Kidderminster</b>
A Southall	½ - ½	D Downes	J E Crump	1 - 0	M D Bissell
K Thomas	½ - ½	E Horwill	J A Friar	½ - ½	J Wrench
P Savage	½ - ½	J Wilson	N A Walker	½ - ½	F Pickett
M Biddle	½ - ½	I Howarth	G Hill	0 - 1	G C Link
R Tuckley	½ - ½	S Jukes	P J Wilkes	1 - 0	J F Gittus
D Brelsforth	1 - 0	DEFAULT	C Bryant	0 - 1	M Riley
<b>Lichfield</b>	3 - 3	<b>Bushbury</b>	<b>West Brom</b>	1½ - 4½	<b>Kingstanding</b>
P Collins	½ - ½	L Grinsell	G Wesson	0 - 1	A Southall
R Allen	½ - ½	R Parry	M Reynolds	½ - ½	K Thomas
J Smith	½ - ½	J Staniforth	M Gregg	½ - ½	P Savage
G Hackett	½ - ½	P Staley	M Smith	0 - 1	R Tuckey
G Lamb	0 - 1	P Pinfold	J Smith	½ - ½	D Brelsforth
A Grant	1 - 0	A B C Smith	C Bryant	0 - 1	P Jones

<b>West Brom B</b>	½ - 5½	<b>Lichfield</b>	<b>Wolverhampton</b>	4 - 2	<b>Stafford</b>
G Wesson	0 - 1	P Collins	M Townsend	0 - 1	G Acey
M Reynolds	0 - 1	R Allen	D Daniels	1 - 0	R V H Butters
M Gregg	½ - ½	J Smith	T L Fellows	1 - 0	J Hayward
M Smith	0 - 1	G Lamb	P Porter	1 - 0	D Morris
J Smith	DEF - 1	G Hackett	M Wootton	0 - 1	A T Leadbetter
C Bryant	0 - 1	A Grant	P Eastwood	1 - 0	R Gogerty
<b>West Brom A</b>	2 - 4	<b>Walsall Kipp</b>	<b>Wolverhampton</b>	2 - 4	<b>Telford</b>
J E Crump	1 - 0	W Rea	M Townsend	0 - 1	N Rutter
N A Walker	½ - ½	D Pritchard	T L Fellows	1 - 0	C Roberts
G Hill	½ - ½	R Jones	P Porter	0 - 1	R Arcler
P J Wilkes	0 - 1	C Pohribnyj	P Jones	½ - ½	G Thompson
D M Davies	DEF - 1	N Young	M Wootton	0 - 1	I Wilson
C Bryant	DEF - 1	D Friend	P Eastwood	½ - ½	E Raby
<b>West Brom</b>	1½ - 4½	<b>Stafford</b>	<b>Wolverhampton</b>	2 - 4	<b>West Brom B</b>
G Wesson	0 - 1	G Acey	T L Fellows	½ - ½	G Wesson
M Gregg	½ - ½	R V H Butters	P Porter	½ - ½	M Reynolds
M Smith	½ - ½	J Hayward	F Woods	½ - ½	M Gregg
D Backhouse	½ - ½	D Morris	P Eastwood	0 - 1	M Smith
J Smith	0 - 1	A T Leadbetter	P J Handscomb	0 - 1	D Backhouse
C Bryant	0 - 1	S Pedder	M Wootton	½ - ½	J Smith

## Division Two

<b>Brewood</b>	2½ - 3½	<b>Lucas BS</b>	<b>Lucas</b>	2 - 4	<b>Stafford</b>
R Grainger	0 - 1	M Tallis	M Tallis	0 - 1	P Ganeri
D Laight	½ - ½	D Stockhall	D Stockhall	½ - ½	R J Carleton
P Crozet	0 - 1	L Johnson	L Johnson	0 - 1	S Peddar
C Buxton	½ - ½	M Hughes	R Gough	1 - 0	R T Gogerty
D Buckley	½ - ½	M Rees	H Hughes	0 - 1	P Evans
B Hall	1 - 0	DEFAULT	M Rees	½ - ½	D Nesbitt

<b>Brewood</b>	1½ - 4½	<b>Rushall</b>	<b>Lucas BS</b>	4 - 2	<b>Wolverhampton</b>
G Luck	0 - 1	M C Wragg	M Tallis	0 - 1	F Wood
D B Hall	0 - 1	S R Wilcox	D Stockhall	½ - ½	P Broomhall
D Buckley	0 - 1	K D Hadley	L Johnson	1 - 0	R Wilkinson
R Fletcher	½ - ½	D Bell	R Gough	1 - 0	G Sands
P Allen	½ - ½	S Cooksey	H Hughes	½ - ½	J Button
J Fenby	½ - ½	R M Gant	A Siddiqi	1 - 0	A Hodges

<b>Bushbury</b>	1½ - 3½	<b>Brewood</b>	<b>Mercia</b>	4½ - 1½	<b>Goodyear</b>
D Davies	0 - 1	D Laight	A P McCumiskey	1 - 0	Martin May
R Brodie	1 - 0	C Buxton	M Share	½ - ½	A Schroeder
M Hancox	0 - 1	P Crozet	B R Smith	½ - ½	J Cooper
K Booth	1 - 0	D Buckley	J Phillips	½ - ½	C Eddies
J Whitehead	0 - 1	B Hall	D W Perks	1 - 0	K Keady
D Keates	½ - ½	R W Fletcher	R Price	1 - 0	DEFAULT

### Result Amended

Breach of Rule 5H - Bushbury (Board 5)

<b>Bushbury</b>	3½ - 2½	<b>Dudley</b>	<b>Mercia</b>	2 - 4	<b>Stafford</b>
P Davies	1 - 0	D G Tranter	A P McCumiskey	1 - 0	P Ganeri
R Brodie	1 - 0	J Foxall	M Share	½ - ½	J Carleton
M Hancox	0 - 1	M Blythe	T Dawes	½ - ½	S Peddar
K Boothe	½ - ½	W Partridge	B R Smith	1 - 0	R Whitehouse
W Pinfold	½ - ½	W Cross	D W Perks	0 - 1	R Gogerty
P Scott	½ - ½	R Carrier	J Phillips	1 - 0	DEFAULT

<b>Dudley</b>	2 - 4	<b>Lucas B S</b>	<b>Rugeley</b>	3½ - 2½	<b>Mercia</b>
D G Tranter	½ - ½	L E Collier	W Hulley	1 - 0	A P McCumiskey
J Foxall	½ - ½	P Maddocks	R Fell	½ - ½	M Share
M Blythe	½ - ½	M E Tallis	A Dobson	½ - ½	B R Smith
W Partridge	0 - 1	H Hughes	P Marklove	0 - 1	J Phillips
W Cross	½ - ½	D Price	J Montague	½ - ½	D W Perks
L Prescott	0 - 1	G Goddard	M Page	1 - 0	D Webb

<b>Goodyear</b>	3 - 3	<b>Walsall Kipp.</b>	<b>Rushall</b>	2½ - 3½	<b>Wolverhampton</b>
Martin May	½ - ½	S Dickens	J G T Sadler	1 - 0	D Bird
A Schroeder	1 - 0	M Groombridge	R J Hancox	0 - 1	F Wood
J Cooper	1 - 0	D Friend	S R Colwell	0 - 1	R Wilkinson
C Eddies	0 - 1	P Jones	N Parker	½ - ½	P Atkiss
P Blunt	½ - ½	J Payton	K D Hadley	1 - 0	P Broomhall
S Jones	0 - 1	S Beasley	N Sims	0 - 1	R Ward

<b>Stafford</b>	<b>2½ - 3½</b>	<b>Bushbury</b>	<b>Walsall Kipp.</b>	<b>3½ - 2½</b>	<b>Rugeley</b>
P Ganeri	½ - ½	P Davies	S Dickens	0 - 1	R Crellin
R S Whitehouse	0 - 1	M Hancox	M Groombridge	1 - 0	R Fell
S Peddar	1 - 0	R Brodie	D Friend	1 - 0	M Page
R T Gogerty	0 - 1	K Boothe	P Jones	0 - 1	P Marklove
P F Evans	0 - 1	P Scott	J Payton	½ - ½	A Meakin
G Argent	1 - 0	DEFAULT	S Beasley	1 - 0	G Painter
<b>Stafford</b>	<b>3 - 3</b>	<b>Rugeley</b>	<b>Wolverhampton</b>	<b>3 - 3</b>	<b>Brewood</b>
R Whitehouse	0 - 1	W Hulley	D Bird	½ - ½	D Laight
R J Carleton	1 - 0	R Fell	F Wood	1 - 0	C Buxton
R T Gogerty	0 - 1	A Dobson	G Rosser	½ - ½	P Crozet
P F Evans	0 - 1	M Page	R Wilkinson	1 - 0	D Buckley
G H DeVisme	1 - 0	A Meakin	R Ward	0 - 1	B Hall
O E Hill	1 - 0	J Westwood	P Broomhall	0 - 1	R Fletcher
<b>Stafford</b>	<b>3½ - 2½</b>	<b>Walsall Kipp.</b>	<b>Wolverhampton</b>	<b>5 - 1</b>	<b>Bushbury</b>
P Ganeri	1 - 0	S Dickens	F Wood	1 - 0	P Davies
R Whitehouse	½ - ½	M Groombridge	G Rosser	1 - 0	M Hancox
R J Carleton	1 - 0	D Friend	R Wilkinson	½ - ½	R Brodie
M Wells	0 - 1	P Jones	P Broomhall	½ - ½	K Booth
R T Gogerty	½ - ½	J Payton	R Ward	1 - 0	DEFAULT
P F Evans	½ - ½	S Beasley	J Button	1 - 0	DEFAULT

### Division Three

Goodyear	1½ - 3½	Thompson	Stafford	1½ - 3½	Walsall Kipp.
P O'Donoghue	0 - 1	C Savage	D Nesbitt	0 - 1	C Southall
A Colabella	0 - 1	KG Humphreys	F Hill	½ - ½	M Savin
K Phillips	1 - 0	K Pittaway	J Tuckley	1 - 0	A Shrimpton
J Grugulis	½ - ½	G Lines	G Argent	0 - 1	D Jarvis
S Jones	0 - 1	D T Guest	K Dwight	0 - 1	B Davies
Goodyear	2½ - 2½	WolverhamptonC	Thompson	3 - 2	Kidderminster
P O'Donoghue	1 - 0	P Atkiss	C Savage	0 - 1	T Pountney
A Colabella	0 - 1	G Sands	K G Humphreys	½ - ½	I Deakin
K Phillips	0 - 1	A Ward	K Pittaway	1 - 0	P Kitchen
J Grugulis	1 - 0	J Button	G Lines	1 - 0	K Brant
S Jones	½ - ½	R Whittingham	D T Guest	½ - ½	M Kitchen
Kidderminster	2½ - 2½	Rushall	Thompson	4 - 1	Stafford
T Pountney	1 - 0	D Bell	C Savage	1 - 0	F Hill
I Deakin	1 - 0	S Cooksey	K G Humphreys	1 - 0	D Nesbitt
P Kitchen	0 - 1	S Allen	K Pittaway	1 - 0	S Keley
K Brant	½ - ½	P Spenser	G Lines	1 - 0	K Dwight
M Kitchen	0 - 1	R Gant	D T Guest	0 - 1	G Argent
Lichfield	4½ - ½	Thompson	WolverhamptonD	3 - 2	Goodyear
D Abell	1 - 0	C Savage	P Hubbard	0 - 1	P O'Donoghue
G Monks	1 - 0	K G Humphreys	P Sanghera	½ - ½	K Phillips
A Mielciewski	½ - ½	K Pittaway	B Lewis	1 - 0	J Grugulis
B Homewood	1 - 0	D T Guest	P Price	½ - ½	K Keady
P Griffiths	1 - 0	M J Jones	L Hesbrook	1 - 0	S Jones
Rushall	0 - 5	Lichfield	WolverhamptonC	2½ - 2½	Kidderminster
D Bell	0 - 1	D Abell	G Sands	0 - 1	T Pountney
J Strachan	0 - 1	A Mielciewski	A Ward	½ - ½	I Deakin
S Cooksey	0 - 1	P Griffiths	J Button	1 - 0	P Kitchen
J Hills	0 - 1	B Homewood	S Wilson	1 - 0	K Brant
S Allen	0 - 1	P Fathers	K Howell	0 - 1	M Kitchen

\*\*\*\*\*

### Division Four

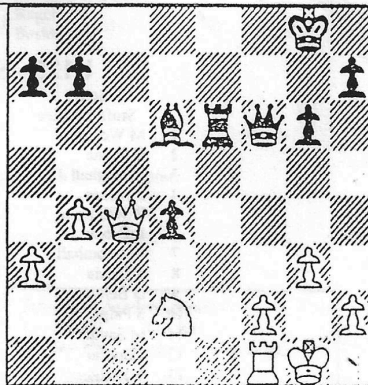
No outstanding matches to report

## B C F QUARTER FINAL – U150

EAST UNION	V	MCCU
NORFOLK	10½ - 5½	STAFFORDSHIRE
1 A Niedzweidski	0 - 1	G I Hackett
2 T Mantripp	½ - ½	Chon L Lee
3 N Gorvin	1 - 0	P D Porter
4 S Moore	1 - 0	C Pohribnyj
5 A Blowers	½ - ½	N Young
6 P Badger	½ - ½	S R Hill
7 L Larter	½ - ½	K A J Francis
8 C Tuffin	1 - 0	J Campbell
9 M Goodwin	½ - ½	M J Groombridge
10 L Gladwell	1 - 0	M W A Hoare
11 G Tebble	1 - 0	P Sargeant
12 J Danger	1 - 0	P J Jones
13 J Wickham	0 - 1	D W Perks
14 N Larter	1 - 0	R L Lewis
15 C Payne	½ - ½	R Dolan
16 D McRoberts	½ - ½	K J Moore

### Puzzlers Corner

Another puzzle for you this month-  
 How does white make effective use  
 of the pin he has on Black's Rook?  
 The solution can be found on Page  
 10



MCCU -

U150 - SEMI FINAL

Nottinghamshire	8½ - 7½	Staffordshire
1 J Tassi	½ - ½	P D Porter
2 T Lane	1 - 0	C Pohribnyj
3 W Selby	½ - ½	N Young
4 A Wright	0 - 1	J Campbell
5 P Kirby	1 - 0	K R Grainger
6 D Levens	1 - 0	A Grant
7 B Hayward	½ - ½	D Whitmore
8 S Cranmer	½ - ½	J Sadler
9 N Haan	1 - 0	M W A Hoare
10 N Bowler	0 - 1	P Sargent
11 J Ozier	½ - ½	P J Jones
12 T Day	½ - ½	J L Payton
13 M Nailard	½ - ½	J Cooper
14 I Hannan	0 - 1	D Perks
15 M Taylor	0 - 1	R Lewis
16 R Taylor	1 - 0	K J Moore

U125

North		South	
Staffordshire	3½ - 12½	Staffordshire	
1 P Sargent	1 - 0	F Wood	
2 S Bumdred	½ - ½	B Payne	
3 N Davies	0 - 1	M Wootton	
4 D Wall	0 - 1	G Rosser	
5 M Hankey (RES)	0 - 1	C Southall	
6 P Shelley	0 - 1	P Atkiss	
7 R Gogerty	0 - 1	N Parker	
8 T Galla	0 - 1	R Brodie	
9 T Kessell	0 - 1	P Broomhall	
10 P Evans	½ - ½	D Bell	
11 S Bruce	0 - 1	J Button	
12 G Valentine	0 - 1	D Buckley	
13 C Burns	1 - 0	A Ward	
14 T Calder	0 - 1	R Ward	
15 D Poole	0 - 1	B Hall	
16 M Baines	½ - ½	A Davies	

U125- SEMI FINAL

South		Nottinghamshire	
Staffordshire	5½ - 10½	North	
1 M Wootton	0 - 1	R Taylor	
2 B Payne	1 - DEF	T Severn	
3 C Southall	½ - ½	R Salter	
4 P Atkiss	DEF - 1	D Alger	
5 R Wilkinson	0 - 1	O Graham	
6 R Brodie	0 - 1	M Jackson	
7 P Broomhall	½ - ½	K Bean	
8 R Lewis	0 - 1	G Elliott	
9 D Bell	½ - ½	P Herring	
10 S Palph	0 - 1	T Hyatt	
11 M Savin	0 - 1	A Freeman	
12 J Button	DEF - 1	D Ince	
13 A Hodges	1 - DEF	S Wells	
14 B Hall	1 - 0	S Turner	
15 A Ward	1 - 0	C Potter	
16 R Fletcher	0 - 1	A Smith	

## LEAGUE TABLES

Division One	P	W	D	L	Pts
Telford A	10	8	2	0	18
Lichfield A	10	6	2	2	14
Walsall Kipping A	10	3	7	0	13
Stafford A	10	5	2	3	12
Stourbridge	10	3	5	2	11
West Bromwich A	10	3	3	4	10
Kingstanding	10	3	2	5	8
Bushbury A	10	2	3	5	7
West Bromwich B	10	2	2	6	6
Kidderminster A	10	1	3	6	5
Wolverhampton A	10	2	3	5	3

Division Two	P	W	D	L	Pts
Mercia A	10	9	0	1	18
Walsall Kipping B	10	7	1	2	15
Wolverhampton B	10	5	2	3	12
Goodyear A	10	4	3	3	11
Brewood A	10	4	2	4	10
Rushall A	10	3	3	4	9
Rugeley A	10	3	2	5	8
Stafford B	10	2	3	5	7
Dudley	10	3	0	7	6
Lucas B S	10	4	0	6	5
Bushbury	10	3	0	7	3

Bushbury lose 2 points for Breach of rule 5E (1)

Division Three	P	W	D	L	Pts
Lichfield B	9	8	0	1	16
Walsall Kipping C	9	8	0	1	16
Thompson	9	7	0	2	14
Kidderminster B	9	4	2	3	10
Wolverhampton D	9	4	1	4	9
Rushall B	9	2	2	5	6
Stafford C	9	1	3	5	5
Goodyear B	9	1	2	6	4
Telford	9	2	1	6	3
Wolverhampton C	9	1	3	5	1
Dudley					

WITHDRAWN

Division Four	P	W	D	L	Pts
Walsall Kipping D	6	5	1	0	11
Brewood B	6	3	2	1	8
Rushall C	6	3	1	2	7
Mercia B	6	4	0	2	7
St. Mary's, Cannock	6	2	0	4	4
Rugeley B	6	2	0	4	4
Bushbury C	6	0	0	6	0

Rule 10B has been applied to teams with the same points

Solution to puzzlers' corner:-  
 1) N - K4      Q - K4  
 2) N - N5!! & white wins material.

## STAFFORDSHIRE COUNTY CLUB CHAMPIONSHIPS

### HICKMAN CUP. SEMI-FINAL

Stafford	2½ - 3½	Trentham	Walsall Kipp	4½ - 1½	Lichfield
L Cooper	1 - 0	A Richardson	D P Wheeler	½ - ½	P Wallace
G Acey	½ - ½	J Bourne	D W Anderton	1 - 0	P Collins
R V H Butters	0 - 1	R Hayward	Jana Bellin	1 - 0	R Allen
J Hayward	0 - 1	S Hill	M Denny	1 - 0	J Smith
D Morris	1 - 0	C Ferry	W Rea	½ - ½	G Hackett
A T Leadbetter	0 - 1	J Campbell	D Pritchard	½ - ½	J Keaveney

### GOTHARD CUP

Lichfield	4 - 1	Trentham
J Smith	½ - ½	S Hill
G Hackett	1 - 0	J Campbell
F Farmery	1 - 0	C Ferry
A Wilson	½ - ½	P Sargeant
D Fone	1 - 0	D Wall

### JACKSON CUP

Rushall	1½ - 3½	Walsall Kipp	Wolverhampton	3 - 2	Kidsgrove
S Colwell	0 - 1	C Southall	G Rosser	1 - 0	S Elliott
R J Hancock	0 - 1	S Beasley	P Atkiss	0 - 1	J E Blackburn
N Parker	½ - ½	M Savin	J Button	0 - 1	S G Blackburn
N Sims	½ - ½	J Martin	P Broomhall	1 - 0	Suzie Blackburn
D Bell	½ - ½	A Shrimpton	R Ward	1 - 0	R Bennett

### WITHNALL CUP

Brewood	2 - 3	Stafford	Stafford	4 - 1	Rushall
P Crozet	½ - ½	G DeVisme	T Bailey	DEF - 1	S Cooksey
D Bucklev	½ - ½	F Hill	F Hill	1 - 0	J Hills
B Hall	0 - 1	D Nesbitt	D Nesbitt	1 - 0	S Allen
R Fletcher	0 - 1	J Tuckley	J Tuckley	1 - 0	J Hennion
J Fenby	1 - 0	K Dwight	G Argent	1 - 0	C Wilcox
Tamworth	4 - 1	Goodyear			
R Griffiths	½ - ½	P O'Donoghue			
P Wright	1 - 0	A Collabella			
D Prentice	1 - 0	K Phillips			
E Golightly	½ - ½	J Grignulis			
J Palmer	1 - 0	S Jones			

### ROCK CUP

#### Round One

D Buckley	0 - 1	L Collier	K Francis	1 - 0	B Hall
B Lewis	0 - 1	M Groombridge	D Bird	1 - 0	R Fletcher
P Allan	0 - 1	P Eastwood	G Rosser	0 - 1	D Perks
M Allen	1 - DEF	P Price	P Crozet	BYE	

#### Round Two

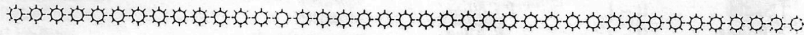
L Collier	½ - ½	P Crozet	P Eastwood	0 - 1	K Francis
	1 - 0		D Perks	0 - 1	D Bird
M Groombridge	1 - DEF	M Allen			

#### Semi Final

D Bird	0 - 1	L Collier	K Francis	0 - 1	M Groombridge
--------	-------	-----------	-----------	-------	---------------

#### Final

L Collier V M Groombridge



### Bidgood Cup

#### Round One

B Hall	½ - ½	B Lewis	D Buckley	BYE
	½ - ½		P Allen	BYE
	½ - ½			
R Fletcher	0 - 1			
	0 - 1	G Rosser		

#### Round Two

G Rosser	0 - 1	P Allan	B Lewis	1 - 0	D Buckley
----------	-------	---------	---------	-------	-----------

#### Final

B Lewis V P Allan

## Pittaway Cup

### Round One

<b>Brewood</b>	<b>5¼-4</b>	<b>Walsall Kipp</b>	<b>Kidderminster</b>	<b>5½ - 2½</b>	<b>Wolverhampton</b>
R Grainger	½ - ½	N Young	M Bissell	0 - 1	D Daniels
P Crozet	½ - ½	S Dickens	P Yates	1 - 0	L Fellows
C Buxton	½ - ½	D Friend	J Wrench	½ - ½	P Porter
D Buckley	0 - 1	M Groombridge	P Pickett	1 - 0	P Jones
B Hall	1 - 0	S Beasley	G Link	1 - 0	F Wood
M Allen	0 - 1	M Savin	J Gittus	½ - ½	J Hanscombe
R Fletcher	½ - ½	A Shrimpton	T Yates	1 - 0	M Wootton
J Fenby	1 - 0	K Moore	P Thomas	½ - ½	G Rosser
<i>Handicap</i>	1¼ - 0				

<b>Lucas BS</b>	<b>4½ - 3½</b>	<b>Rugeley</b>	<b>Stafford</b>	<b>8 - DEF</b>	<b>Kingstanding</b>
L Collier	½ - ½	W Hulley			
M Tallis	0 - 1	R Crellin			
D Stockhall	1 - 0	A Dobson			
L Johnson	1 - 0	R Fell			
H Hughes	0 - 1	M Page			
D Price	½ - ½	P Marklove			
G Goddard	½ - ½	J Nontague			
A Siddiqi	1 - 0	S Heath			
			<b>Byes:-</b>	<b>Rushall; Telford; Lichfield; West</b>	<b>Bromwich</b>

### Round Two

<b>Rushall</b>	<b>2¾ - 6½</b>	<b>Lichfield</b>	<b>Telford</b>	<b>8 - DEF</b>	<b>West Bromwich</b>
S Wilcox	0 - 1	P Wallace			
J Sadler	0 - 1	P Collins			
A Powis	0 - 1	R Allen			
R E J Parker	0 - 1	T Smith			
S Colwell	½ - ½	G Hackett			
K Hadley	0 - 1	J Keaveney			
K Butler	0 - 1	M Maher			
C Butler	1 - 0	D Abell			
<i>Handicap</i>	1¼ - 0				

### Semi- Final

<b>Lichfield</b>	<b>8 - 1¼</b>	<b>Lucas BS</b>	<b>Stafford</b>	<b>8 - DEF</b>	<b>Telford</b>
P Wallace	1 - 0	L Collier			
P Collins	1 - 0	D Stockhall			
A Allen	1 - 0	L Johnson			
J Keaveney	1 - 0	M Rees			
J Smith	1 - 0	A Johnson			
R Farmery	1 - 0	DEFAULT			
A Grant	1 - 0	DEFAULT			
M Maher	1 - 0	DEFAULT			
<i>Handicap</i>	0 1's				

**Final**  
**Lichfield**      **V**      **Stafford**

### DEFAULTED MATCHES

Division One		Division Two		
Stafford	6 - 0	Kingstanding	Rugeley 6 - 0	Lucas BS
Telford	6 - 0	Kingstanding	Walsall Kipp. 6 - 0	Dudley
Lichfield	6 - 0	Stourbridge	Dudley 0 - 6	Mercia
Stourbridge	6 - 0	Wolverhampton	Goodyear 6 - 0	Bushbury
Telford	6 - 0	West Brom B	Wolverhampton 6 - 0	Stafford

### Division Three

Telford	0 - 5	WolverhamptonD
WolverhamptonC	5 - 0	Telford
Kidderminster	5 - 0	Telford
Walsall Kipp	5 - 0	WolverhamptonC
Rushall	5 - 0	WolverhamptonC

### Adjudications (14 in Total)

R Gogerty (Stafford)	0 - 1	L Prescott (Dudley)	<u>W Clark</u> (West Bromwich)	1/2 - 1/2	D Downes (Stourbridge)
D Pritchard (Walsall Kipping)	1 - 0	J Smith (Lichfield)	<u>E Horvill</u> (Stourbridge)	1/2 - 1/2	G Hill (West Bromwich)
P Yates (Kidderminster)	0 - 1	R V H Buttersv (Stafford)	D Pritchard (Walsall Kipping)	0 - 1	P Savage (Kingstanding)
G Accy (Stafford)	1 - 0	D Gostelow (Telford)	J Smith (Lichfield)	0 - 1	R Archer (Telford)
J Wrench (Kidderminster)	0 - 1	D Pritchard (Walsall Kipping)	W Rea (Walsall Kipping)	1/2 - 1/2	<u>J Hayward</u> (Stafford)
P Griffiths (Lichfield)	1 - 0	P Kitchen (Kidderminster)	B Dudley (Stourbridge)	1 - 0	M Smith (West Bromwich)
<u>J Hayward</u> (Stafford)	1/2 - 1/2	J Wrench (Kidderminster)	P Ganeri (Stafford)	0 - 1	A McCumiskey (Mercia)

Payment due to lost claims. @ £4.00 per result

Club	Number	Amount	Club	Number	Amount
		£			£
Kidderminster	3	12.00	Stourbridge	1	4.00
Lichfield	2	8.00	Telford	1	4.00
Stafford	4	16.00	Walsall Kipping	1	4.00
			West Bromwich	2	8.00

### Breaches

The following teams have failed to comply with rules 6F; 7E; or 5E(1). No penalty is incurred for the initial Breach. However, subsequent breaches incur a deduction of One league point for each breach:

Team	Number of Breaches	Team	Number of Breaches
Telford A	1	Stafford B	1
Wolverhampton A	5	Stafford C	1
Bushbury B	4	Telford B	3
Dudley	1	Wolverhampton C	5
Lucas BS	4	Bushbury C	2
Rushall A	1	Mercia B	2

Production of this newsletter has been sponsored by :-



**STITCH 'N' PRINT**  
HIGH QUALITY EMBROIDERED, PRINTED or PLAIN GARMENTS  
T-SHIRTS • SWEATSHIRTS • WORKWEAR • POLO SHIRTS • CAPS • JACKETS Etc.  
For COMPANIES • PUBS • CLUBS

13 MOUNT PLEASANT, BILSTON, WEST MIDLANDS WV14 7LJ  
Tel: 01902 354999/634119. Mobile: 0973 491879

STITCH 'N'PRINT are pleased to cater for one -off or small runs for clubs, pubs, etc.....

**SPECIAL OFFER!!**

For Chess clubs or Players

Have your Club Name, Personal Logo, Name or Design embroidered on

- SWEATSHIRTS
- POLOSHIRTS
- 'V' NECK JUMPERS

For details, ring STITCH 'N'; PRINT on

01902 - 354999

And remember to tell them where  
you saw their name !